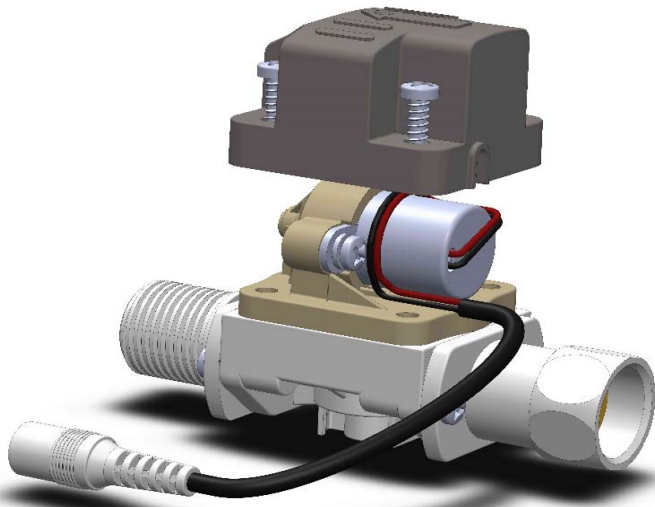
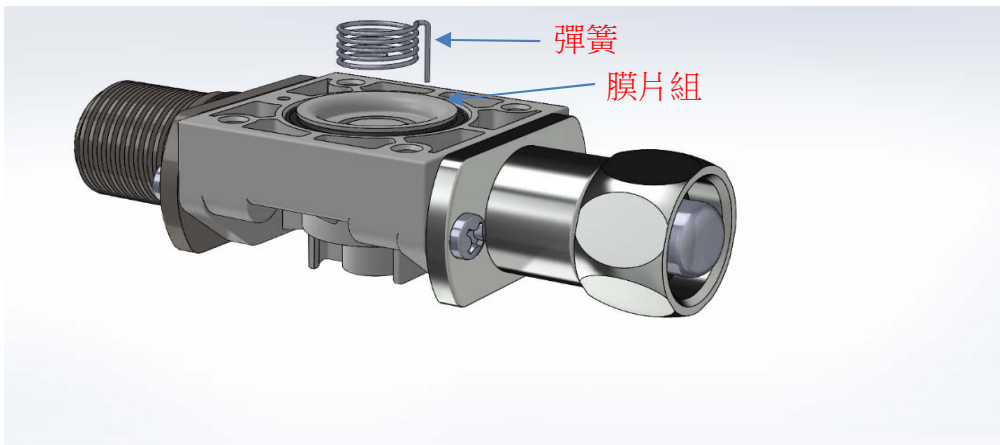


## SV233DC 電磁閥拆裝與維修步驟



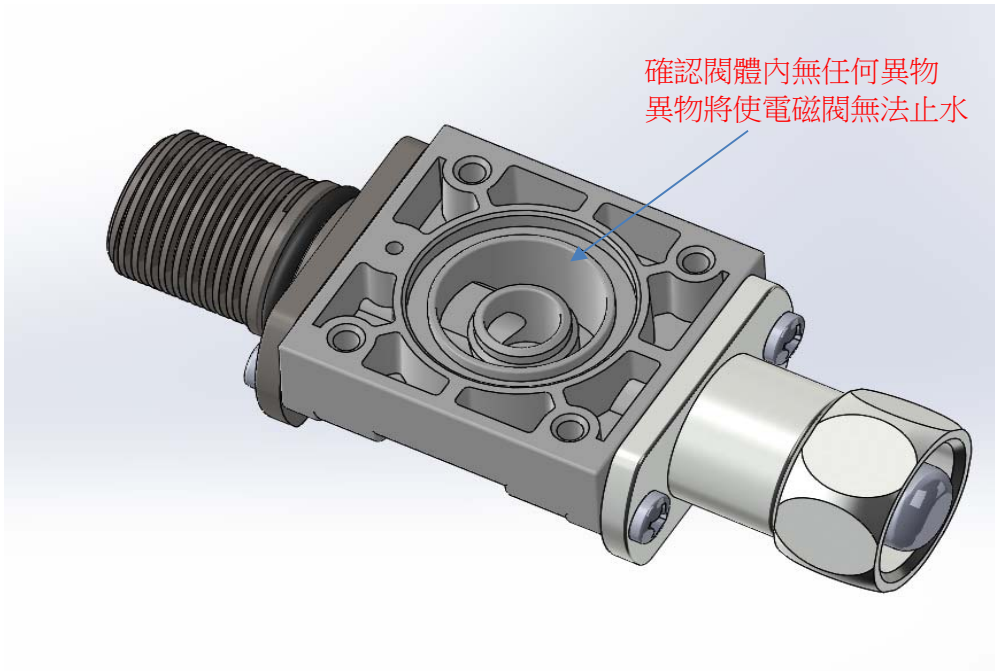
將上蓋四顆螺絲鬆開



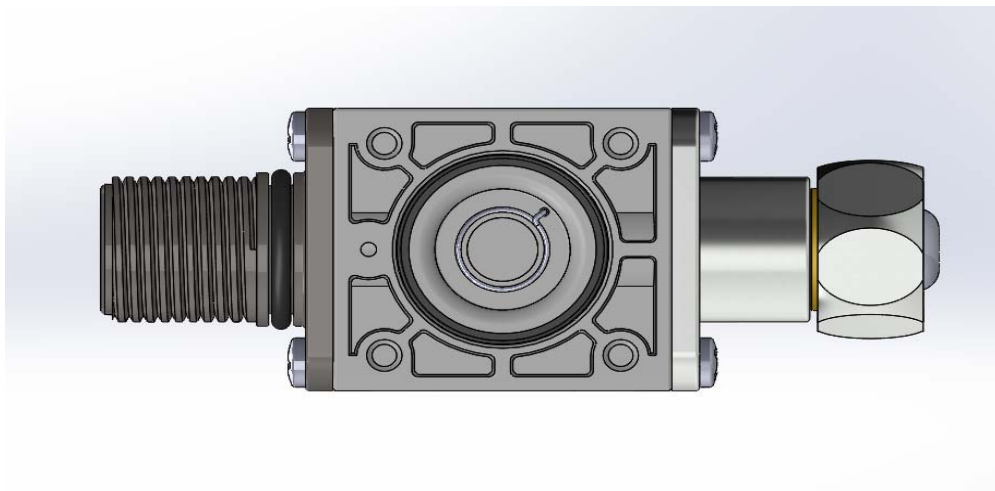
取出彈簧及膜片組



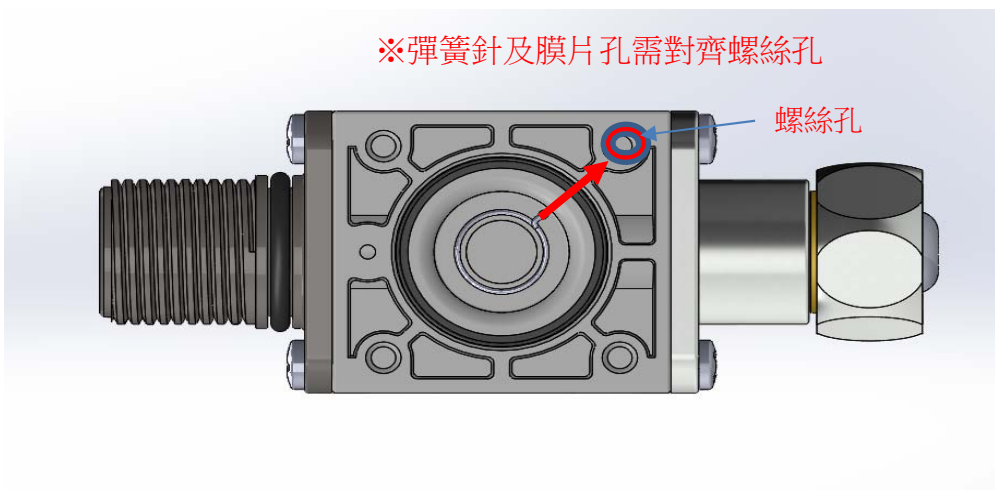
清潔膜片組或更新

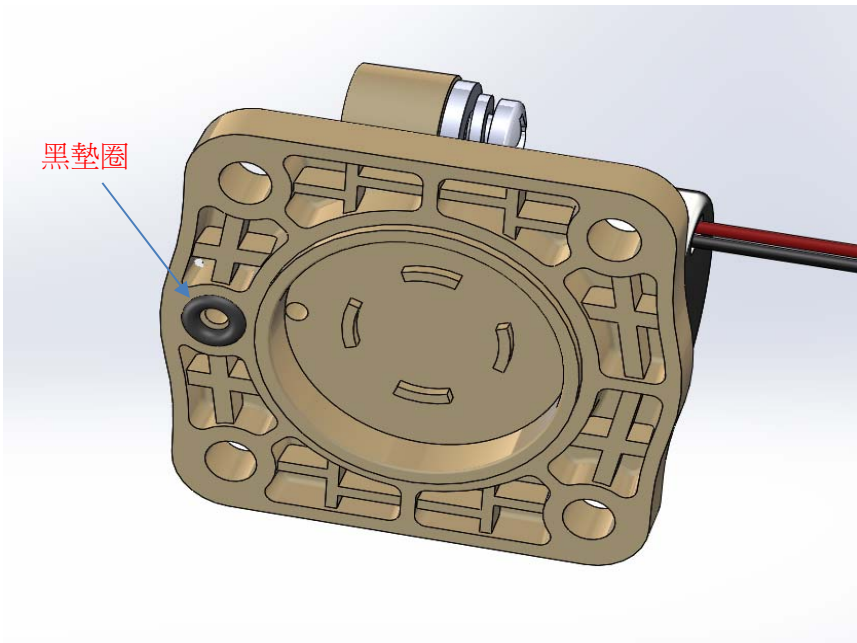


清潔閥體內部



放回膜片及彈簧  
(注意方向性)





黑墊圈

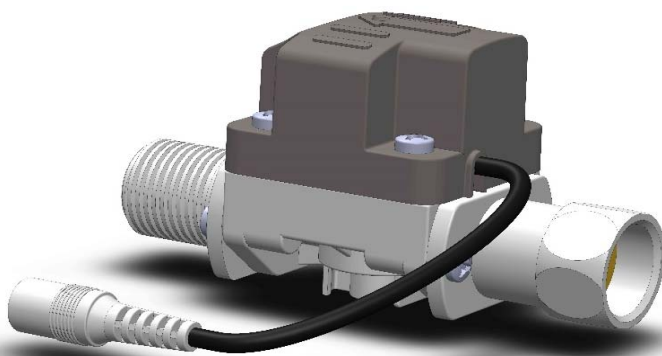
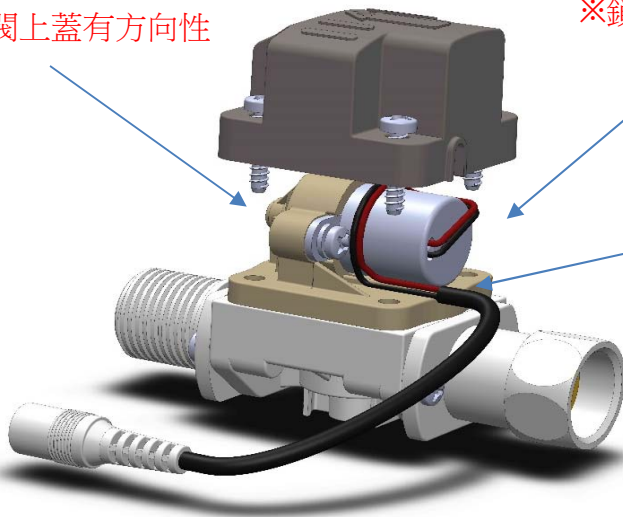
※先檢查上蓋內黑墊圈

※注意閥上蓋有方向性

※鎖螺絲要注意不要夾到內部線材

將上蓋依圖示鎖回閥本體

※注意繞線及理線方式



電磁閥組裝完成